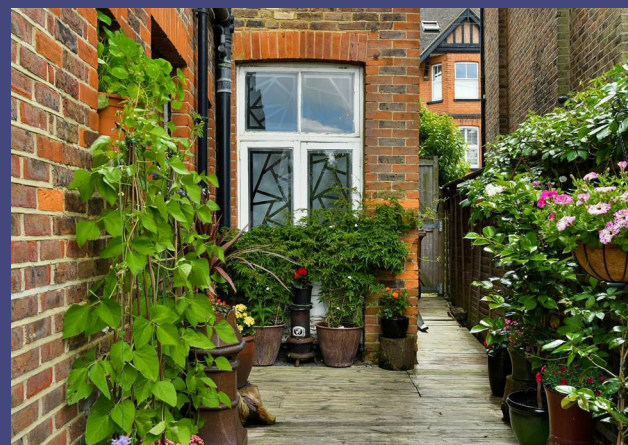
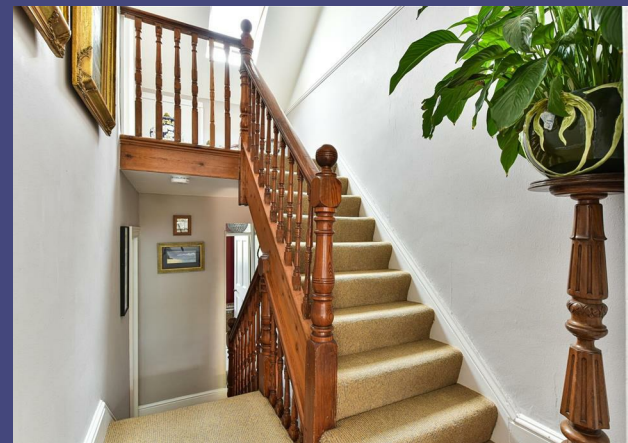


Lynwood Road
Redhill
Surrey
£595,000



RALPH JAMES

FLOOR PLANS



Lynwood Road, Redhill

Total Area: 146.8 m² ... 1580 ft² (excluding eaves storage)

FOR ILLUSTRATIVE PURPOSES ONLY.

(Whilst every attempt has been made to ensure the accuracy of the floor plan shown, all measurements, positioning, fixtures, features, fittings and any other data shown are an approximate interpretation for illustrative purposes only and are not to scale.)

No responsibility is taken for any error, omission, mis-statement or use of data shown.

The above statement applies to both 'Still Moving London LTD' and the Company or individual displaying this floor plan.

Unauthorised reproduction prohibited.

© Still Moving London LTD (www.stillmovinglondon.com)

RALPH JAMES



IN A NUTSHELL



Pretty well presented garden



Three / Four bedrooms



Separate living & dining rooms



Family Bathroom



Large Kitchen/Breakfast room



Driveway



WHAT'S GREAT?

Tucked away in a quiet residential road, we are proud to present this beautiful family home. This pretty detached house is tucked away in a cul de sac, it's grand stature and great location make it a treat for anyone looking to move to the area.

Through the porch where you can keep your winter boots and rain coats, into the hallway where to your left is the lounge with a bay window and cast iron fireplace, you can add in some big comfy sofa's and get cosy in the colder evenings with a good movie. Along the hall you'll find the separate dining room with large patio doors leading you to the garden where you can enjoy the views or sit outside during the summer, enjoying the sun. The kitchen/breakfast room is a generous size with lots of storage space as well as additional access to the garden. The hallway also gives you access to the converted cellar that you could use as an extra reception room or even convert into a home cinema!

Upstairs has a split level landing following onto the three bedrooms that have plenty of space to add in some built in storage and really make it your own. The family bathroom has a large bath with overhead shower, it's tiled design makes it easy to keep clean. Up the staircase to the second floor is a fourth bedroom and access to the eaves for some additional storage.

The garden is split with the decking giving you room for some lovely patio furniture to relax on and the greenery provides privacy from the surrounding neighbors.

Redhill town centre is currently going through an extensive makeover over the next couple of years, it's station has great links into London and Gatwick, there's a section of high street shops and places to grab a bite.





Ashley likes it
because....

"Having grown up in Redhill all my life, Lynwood Road has always been my favourite road. These are houses that really pull at your heart strings. We'd all love to live in the luxury streets of London, but to me this road brings London to us at a third of the price. Within such a short walk to the station, and being able to step off the train into central London in under 30 minutes, this really is the perfect home for any Londoner looking to move to the outskirts of the city."

SELLER'S SECRET

CLOSE TO HOME

Reigate Station 0.5m

Memorial Park 0.2m

Donyings Leisure Centre 0.7m

St Bedes School 0.7

Wray Common School 1.0m

Lime Tree School 1.1m

East Surrey Hospital 2.2m

Gatwick Airport 7.2m

To buy or not to buy...

RALPH JAMES



39 High Street | Redhill | RH1 1RX | 01737 765555
admin@ralphjames.co.uk | www.ralphjames.co.uk

